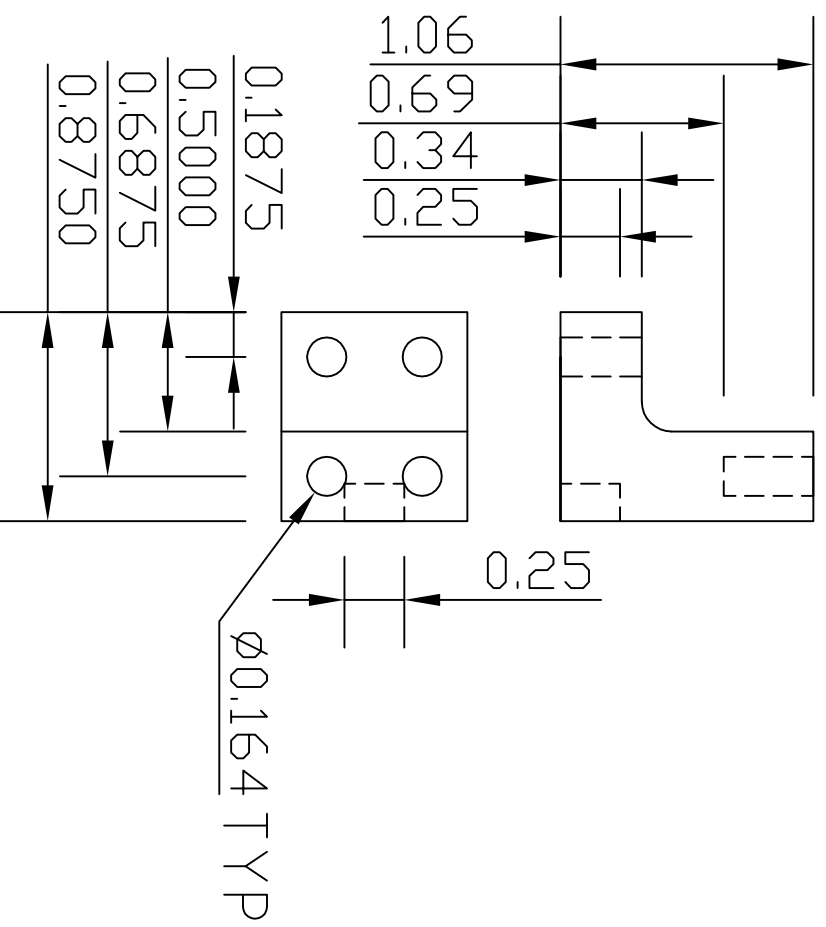


Acrylic; top holes are 6-40 tapped and bottom holes are 6-40 clear. Back opening is for servo wire relief.



SERVO MOUNTS

DRAWN BY: IVAN GOURLAY

DATE: MAY 1/07

QUANTITY: 4

DWG NO.: PHYS420

UNITS: INCHES

SCALE: FIT